



DIGITAL EQUITY IN ARLINGTON



ARLINGTON
VIRGINIA

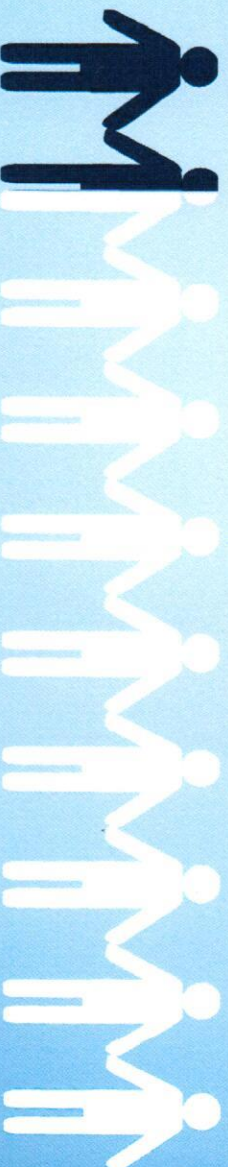
VAGHC

DIGITAL EQUITY: AVAILABILITY,
AFFORDABILITY AND
ACCESSIBILITY

NOVEMBER 19, 2020

DIGITAL DIVIDE IN ARLINGTON

10 PERCENT of households do not have access to a fixed home broadband internet connection (cable, fiber optic or DSL).



72 PERCENT of households that lack access to broadband internet connection (which includes cable, fiber optic, or DSL; a cellular data plan; satellite; or a fixed wireless subscription) earn \$75,000 or less annually.

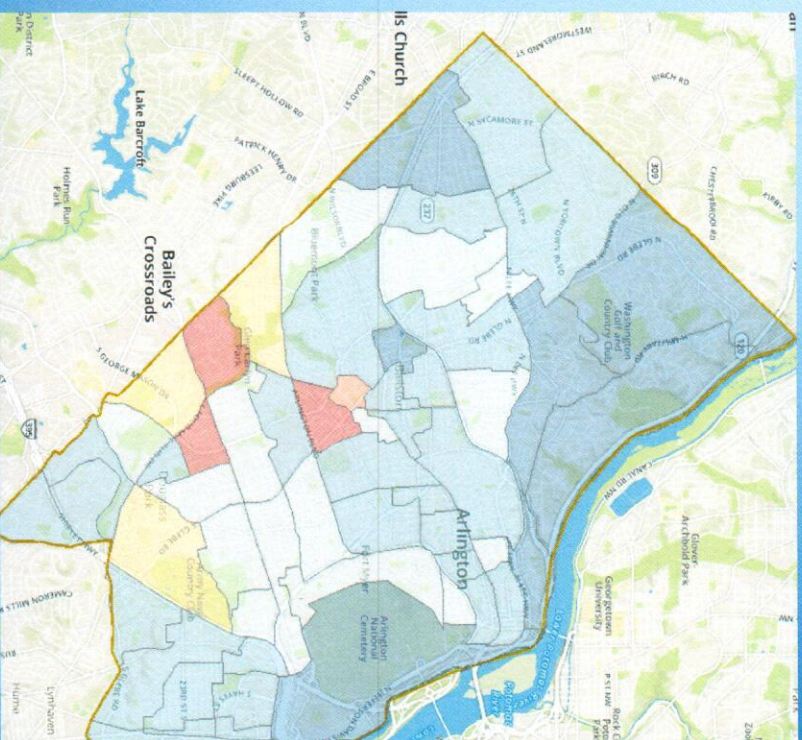
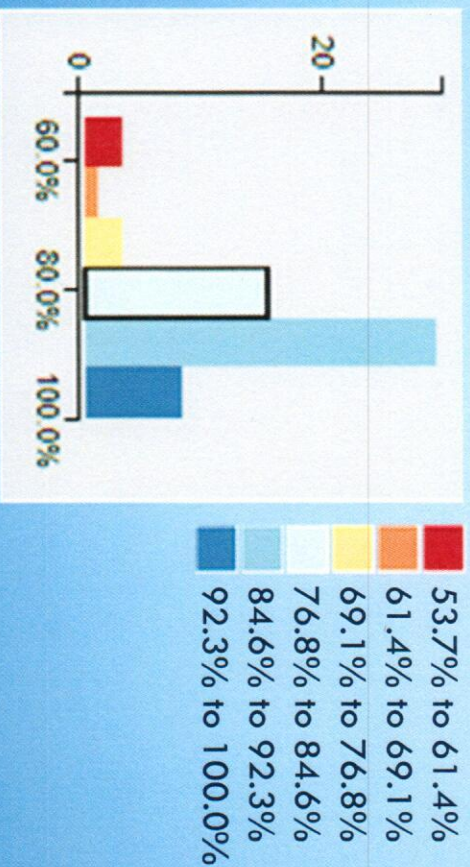


Source: U.S. Census Bureau's [2013-2017] American Community Survey 5-year estimates

WHERE DOES THE DISPARITY EXIST?

Census tracts with the lowest fixed home broadband adoptions rates correlate to Arlington's low- and moderate- income neighborhoods (Buckingham, Nauck, Columbia Heights West, Douglas Park, Columbia Forest)

59 tracts total

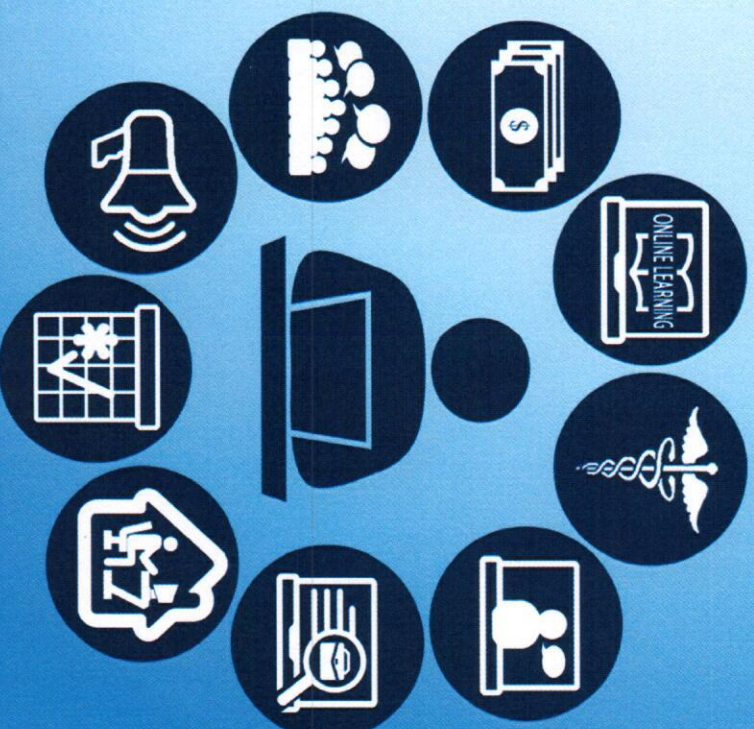


Source: U.S. Census Bureau's [2013-2017] American Community Survey 5-year estimates

WHY IS DIGITAL EQUITY IMPORTANT?

Access to the internet and digital connectivity enables residents to:

- Complete schoolwork online
- Access healthcare resources
- Communicate with friends and family
- Research and apply for jobs
- Work remotely
- Make appointments
- Public safety awareness
- Participate in civic engagement
- Pay bills online

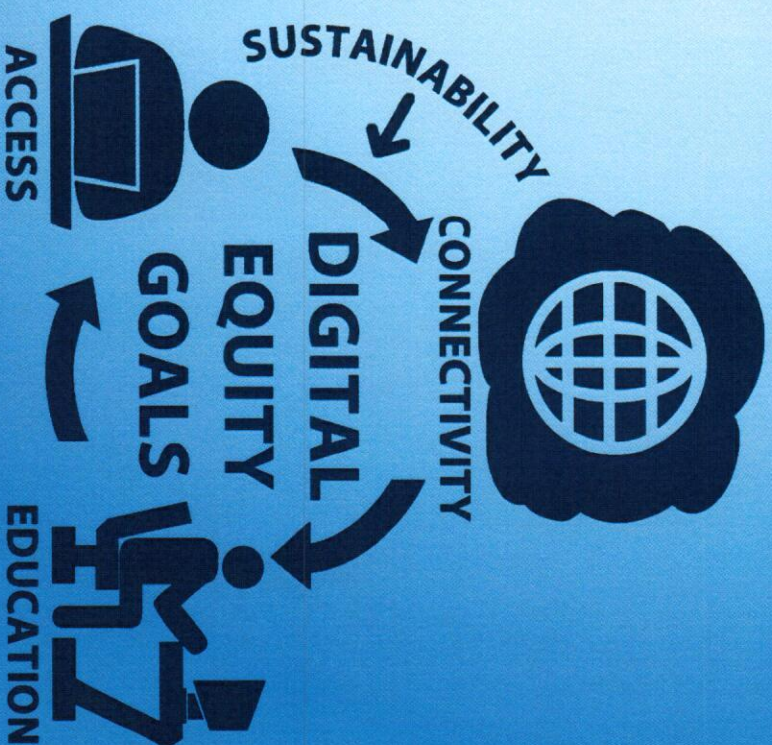


ARLINGTON'S VISION FOR DIGITAL EQUITY

- All Arlingtonians have the information technology capacity needed to fully participate in the community and economy.

Strategies will address:

- **CONNECTIVITY:** Arlington residents are able to connect to affordable broadband internet.
- **ACCESS:** All residents can access the internet with a device.
- **USABILITY:** Residents have the appropriate digital skills necessary to be successful on the internet.
- **PROGRAM SUSTAINABILITY & COMMUNITY CAPACITY:** Arlington's strategies to achieve its digital equity goals are sustainable and the community is engaged on the issue.



COMMUNITY SURVEY RESULTS

DIGITAL EQUITY IN ARLINGTON JUNE 2020

87% pay
\$50+ for
internet

50% w/
students
have
connection
issues

52% use
computer
or tablet
39% use
cell

43% better
price
32% better
quality

74% have
4+ devices

PROGRESS UPDATES SINCE COVID

1,600
Patients

Free Clinic Connection to Hospital
Platform to improve outcomes for individual's w/o Medicaid

~900
Students

Comcast Internet Essentials
Participate in distance learning and support family needs

Avg 370 Connects per week @ 19 sites

County Wi-Fi Hotspots
Extend Wireless Connectivity

14 school sites & 4 intersections

Pop Up Wi-Fi Hotspots
Bring Wi-Fi options closer to residences

PRIORITY FOCUS TO CARRY US THROUGH COVID

Feasibility Study

Provide a framework and cost model of providing broadband connectivity to affordable housing properties

Wi-Fi Blaster Project

Create a private LTE network using CBRS technology to provide APS students along Columbia Pike broadband access in their homes

Digital Equity Action Plan

Provide a policy framework with defined action steps and strategies to align funding and priorities



CONTACT

HOLLY HARTELL
ASSISTANT CIO FOR STRATEGIC INITIATIVES, ARLINGTON
COUNTY

HHARTELL@ARLINGTONVA.US

[HTTPS://DEPARTMENTS.ARLINGTONVA.US/DTS/DIGITAL-
EQUITY/](https://DEPARTMENTS.ARLINGTONVA.US/DTS/DIGITAL-EQUITY/)